

ESKILSTUNA AIRPORT



Eskilstuna airport is ready for emergencies 24/7

Eskilstuna airport has been one of the country's temporary emergency airports since December 2020. This is to be able to cover the health service's needs during the current pandemic.

It is important to ensure vital functions for society such as flights for the emergency services or ambulance runs with patient transports. Emergency airports are an important prerequisite for this. The government has therefore commissioned the Swedish Transport Administration to negotiate with airports throughout the country regarding temporary emergency capacity. One of these airports is Eskilstuna Airport, which is operated by Eskilstuna Logistik och Etablering AB.

"We are used to dealing with contingencies in Eskilstuna as fast responses are often required. It is first and foremost about patient safety. It doesn't just concern Covid patients, but also transporting donations and other items," says Johan Kalfas, operations manager at Eskilstuna Airport.

During the pandemic many airports have been forced to layoff staff, which has meant that several regions have had problems in



To meet the regional needs, there are now agreements in place with several airports to

moving patients between the hospitals by air.



be prepared for this type of transport. The agreements entail the airports maintaining emergency preparedness around the clock to receive aircraft that perform urgent transports, or those that are prioritised by the health service for some other reason, air ambulances for example.

"We have a response time to the airport of one hour, around the clock, and the collaboration between airline, region and hospital functions very well. Last spring it was completely new for all of us, but we have now learned to manage it in better way. Being able to put initiatives in place that ensure that everything works, feels really good," Johan Kalfas concludes.



Project for a sustainable energy transition and growth

Mälardalen is one of the major regions with stable growth, many people wanting to live here and establish new companies. In line with Eskilstuna's growth, we are seeing increased electricity consumption, which can lead to a shortage of transmission capacity. A project was started in autumn 2020 which, in conjunction with companies, will find solutions for how we can use resources sustainably to enable continued growth and make room for new establishments.

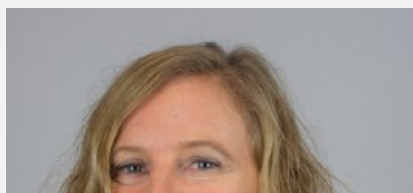
An energy- and resource-efficient society needs cooperation between energy generation, energy distribution and energy users. The project, Effektoptimering (Power Optimisation) Eskilstuna, is working to bring stakeholders together to create environmental benefit.

"Together with existing and new companies, we want to create conditions for a green transition and growth in Eskilstuna. We are therefore looking at what we can do locally, here and now, to reduce the power peaks in the electricity grid," says Linda Werther Öhling, project manager.

One solution to resolving the problems of limited transmission capacity is demand flexibility, where energy users adapt their electricity consumption according to the load on the electricity grid. Another way to free up capacity is to make agreements with energy users who have their

"We cannot say no and have the establishments wait for several years. It is therefore important that we have an effective collaboration and discuss what each of us can do to contribute to a sustainable energy transition," says Mikael Jonsson, establishment manager at Eskilstuna Logistik och Etablering AB.

The project is run by Eskilstuna municipality, Eskilstuna Energi & Miljö, SEVAB, Eskilstuna Logistik och Etablering AB, as well as Mälardalen University.



own back-up power that they will start it up in the hours during the year when the electricity grid is heavily loaded.

*Project manager,
Linda Werther Öhling*



Skånlog AB expanding its operation in Eskilstuna

Skånlog AB will be increasing its capacity during the year so that it can take on new customers within the warehousing and logistics sector.

Skånlog AB is principally engaged in warehousing and, in line with its core business continuing to increase, it has recently signed a contract with a large new customer that is expected to be on site in summer of 2021.

"Overall, Skånlog Group perceives a major potential for growth both in Eskilstuna and throughout Sweden, which we will work hard to exploit in the coming years," says Cecilia Carlström, logistics manager at Skånlog AB.



*Skånlog warehouse
building in Eskilstuna*

The expansion in Eskilstuna increases the capacity by more than 11,000 square metres and gives Skånlog AB the opportunity to consolidate its core business at a single address.



*Cecilia Carlström,
logistics manager at Skånlog AB*

Read previous issues of Progress Report

In Progress Report we write about everything that concerns establishments and logistics in and around Eskilstuna, with the focus on the Intermodal Terminal and the Logistics Park. If you are curious about what we have written about in previous issues, then you can find the editions of our newsletter [here](#).



Curious about a site in Eskilstuna Logistics Park? 300 000 square metre site directly beside the E20



THIS IS WHERE YOU CAN MEET US DURING 2021

We are monitoring the development of coronavirus and awaiting a decision on which events will be held.

Follow us on LinkedIn



Our logistics area is directly adjacent to rail, motorway and air links in the Stockholm-Mälardalen growth area. We have one of the country's leading container terminals and a large logistics park. We want to offer long-term, sustainable and efficient solutions for companies and easy access to several different modes of transport. That's how we will create more jobs in Eskilstuna.

Eskilstuna Logistik och Etablering AB • Box 78 • 631 02 Eskilstuna
info@eskilstunalogistik.se



[Recommend a friend](#) | [Unsubscribe](#) | [Click here to read the message in your browser](#)

Skickat med Paloma